


MAHAVITARAN
Maharashtra State Electricity Distribution Co. Ltd.
(A Govt. of Maharashtra Undertaking)
CIN:U40109MH2005HGC153645

E-mail :- managerpmpr@mahadiscom.in

Fax No. :- 022 -26580642

Web site : www.mahadiscom.in

Man Power Review Cell

M. S. E. D. Co. Ltd, "Prakashgad", 4th floor,
Station Road, Bandra (E), Mumbai - 400 051

No. HR/GM(HR)/MPR/ **018421**

Date : **01 JUL 2019**

OFFICE ORDER: MPR - 53/2019

The Chairman & Managing Director, MSEDCL, in consultation with the Director (Finance), Director (Operations), Director (Commercial) and Director (Projects) has issued office order No. CMD/OO/3547 dtd.01.02.2019, office order no. CMD/OO/8942 dtd.30.03.2019, corrigendum dtd.06.06.2019 & email dtd.20.06.2019 to modify the functional hierarchy, structure and sanctioned posts of Assistant Engineer and above up to the post of Executive Director in Distribution cadre under functional Directors so as to have clear demarcation of the work performed under them. Accordingly, the changes incorporated in the HRMS system are as follows:

- 1) The new Technical cadre Offices with revised sanction of posts under Director (Operations), Director (Commercial), Director (Projects) and newly created Executive Director (Billing and Revenue) with the names of new Departments and Cells under them in Corporate Office are shown at Annexure-I to IV. (Please see attached Departmental flow charts No. 1 to 12)
- 2) The revised sanction of other Technical cadre Offices that will remain on the establishment of Corporate office is shown at Annexure-V & the revised sanction of QC offices are shown at Annexure-VI.
- 3) The nomenclature of Offices headed by Chief Engineers (Dist) are named as "Department" and the offices headed by Superintending Engineer (Dist)/ Executive Engineer (Dist) are named as "Cell" respectively in the Corporate Office.
- 4) The posts of Chief Engineer (QC) located at Pune & Aurangabad Regional Offices are relocated and new Testing & QC Department and Renewable Energy Department are established at Corporate office. The remaining 02 posts of Chief Engineer (QC) at Nagpur & Kalyan Regional Offices will remain as sanctioned till further instructions.
- 5) The post of 01 Executive Engineer (Dist) and 03 posts of Dy. Executive Engineer (Dist) from the establishment of all the 04 Chief Engineer (QC)'s located at Kalyan, Pune, Aurangabad & Nagpur Regional Offices is diverted on the establishments of Corporate Office. The remaining officers/employees of QC offices will remain as it is.
- 6) IPDS section and Infra planning Section under Director (Projects) is renamed as Projects Department and Special Projects Department respectively at Corporate Office.

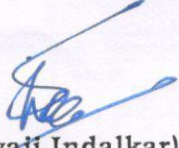


- 7) Out of 04 sanctioned Executive Engineer (Dist) of DDUGJY Cell, One Executive Engineer (Dist) will function/diverted as Executive Engineer (Dist)-Capex Monitoring Cell at Corporate Office.
- 8) Out of the 02 sanctioned Addl. Executive Engineer (Dist) of Capital works Cell, One Addl. Executive Engineer (Dist) will function/diverted as Addl. Executive Engineer (Dist)-Capex Monitoring Cell at Corporate Office.
- 9) Chief Investigation Officer (CIO) will additionally look after the functioning of HVDS Cell under Director (Projects) till further instructions.
- 10) Technical Establishment section is renamed as Technical Establishment Cell & 01 post of Assistant Engineer(Dist) from the Cell is diverted and relocated on the establishment of Corporate office.
- 11) Mantralaya co-ordination Cell is newly established at Corporate office and 01 post of Executive Engineer (Dist) is sanctioned for it.
- 12) The post of 01 Asstt. General Manager (F&A) and 03 posts of Dy. Manager (F&A) from the sanction of finance department is to be diverted to the establishment of newly created Renewable Energy Department, Recovery Cell and Consumer Service & Business Intelligence (CS&BI) Cell.
- 13) After the completion of Projects work in Infra Cell, the available surplus 03 posts of Addl. Executive Engineer (Dist), 03 posts of Dy. Executive Engineer (Dist) and 03 posts of Assistant Engineer (Dist) will be diverted to the offices as per the (*) remarks shown on attached Departmental flow charts and the remaining 01 posts of Superintending Engineer (Dist) & 03 posts of Executive Engineer (Dist) will be diverted to Corporate office Surplus Pool.
- 14) The other Technical cadre offices i.e. Energy Accounting & Analysis wing (IR Cell), Demand Side Management Cell, Regulation Updating Cell, Rural Electrification Cell, Complaint Monitoring Cell and Consumer Facilitation center will stand abolished after complete transfer of all the Technical & Non-Technical staff. The order of Non-Technical staff allocation will be issued separately by the concerned department head.
- 15) The Technical cadre offices mentioned at Annexure-I to Annexure-V will only exist in Corporate office hence forth.

If there is any discrepancy noticed in the order, the directives given in office orders issued by CMD office from time to time shall prevail.

This order is available on RAPDRP Portal/Employee Portal.

Encl: as above.


(Shivaji Indalkar)
Cdr (Retd)
Chief General Manager(HR) (I/C)

Revised Sanction of Executive Directors (Distribution) to Assistant Engineers (Distribution) under Director (Operations), Director (Commercial), Director (Projects) & Executive Director (B&R).

Annexure-I

Sr. No.	Offices/Sections	Revised Sanction of sections under Director (Operations)							Total
		ED	CE	SE	EE	AD. EE	DY. EE	AE	
A	DIRECTOR (OPERATIONS)	1	0	0	0	0	0	0	1
	Executive Director-II (Dist)	0	1	0	0	0	0	0	1
1	Distribution & Maintenance Department	0	0	1	2	1	1	4	9
1.1	Capital Works Cell	0	0	1	3	2	3	5	14
1.2	Maintenance Cell	0	0	1	2	2	1	4	10
1.3	HT Co-ordination Cell (Old RE)	0	1	3	7	5	5	13	34
	Distribution Department Total	0	1	1	5	2	1	11	21
2	Material Management Department	0	1	1	5	2	1	11	21
	Material Management Department Total	0	1	0	0	0	0	0	1
3	Testing & QC Department	0	1	0	0	1	0	3	7
3.1	Material Specification Cell	0	0	1	2	1	0	2	6
3.2	Network Planning Cell	0	0	0	1	1	0	2	4
3.3	Testing Co-ordination Cell	0	1	2	5	3	0	7	18
	Testing Department Total	0	1	2	5	3	0	31	74
	Total	1	3	6	17	10	6	31	74

Annexure-II

Sr. No.	Offices/Sections	Revised Sanction of sections under Director (Commercial)							Total
		ED	CE	SE	EE	AD. EE	DY. EE	AE	
B	DIRECTOR (COMMERCIAL)	1	0	0	0	0	0	0	1
	Executive Director-I (Comm)	0	1	0	0	0	0	0	1
1	Power Purchase Department	0	0	1	2	2	5	5	15
1.1	Conventional Power Purchase Cell	0	0	1	2	2	2	4	11
1.2	Power Trading & Load Management Cell	0	0	1	2	2	7	9	27
	Power Purchase Department Total	0	1	2	4	4	0	0	1
2	Commercial Department	0	1	0	0	2	2	7	15
2.1	Commercial/Open Access Cell	0	0	1	3	2	2	7	16
	Commercial Department Total	0	1	1	3	2	0	0	1
3	Renewable Energy Department	0	1	0	0	0	0	8	16
3.1	Renewable Energy Cell	0	0	1	3	2	2	4	13
3.2	Kalwa Load Management Cell	0	0	1	4	0	6	12	30
	Renewable Energy Department Total	0	1	2	7	2	0	4	11
4	TRC Cell	0	0	1	4	2	0	32	85
	Total	1	3	6	18	10	15	32	85

Annexure-III

Sr. No.	Offices/Sections	Revised Sanction of sections under Director (Projects)							Total
		ED	CE	SE	EE	AD. EE	DY. EE	AE	
C	DIRECTOR (PROJECTS)	1	0	0	0	0	0	0	1
	Executive Director-III (Infra)	0	1	0	0	0	0	0	1
1	Special Project Department	0	0	1	2	2	2	5	13
1.1	Special Project & DSM Cell -	0	1	1	2	2	2	2	9
	Special Project Department Total	0	0	1	2	2	2	2	9
2	HVDS Department	0	0	1	2	2	2	2	9
	HVDS Department Total	1	0	0	0	0	0	0	1
	Executive Director-IV (Projects)	0	1	0	0	0	0	0	1
1	Project Department	0	0	1	3	3	2	4	13
1.1	IPDS Cell	0	0	1	3	3	1	6	14
1.2	DDUGJY Cell	0	0	1	3	3	3	3	13
1.3	Infra Cell	0	1	3	9	9	6	13	41
	Project Department Total	0	1	3	9	9	10	20	65
	Total	2	2	5	13	13	10	20	65

Annexure-IV

Sr. No.	Offices/Sections	Revised Sanction of sections under Executive Director (B&R)							Total
		ED	CE	SE	EE	AD. EE	DY. EE	AE	
D	EXECUTIVE DIRECTOR (B&R)	1	0	0	0	0	0	0	1
1	Billing & Revenue Department	0	1	0	0	0	0	0	1
1.1	Billing & Revenue Department	0	0	1	3	2	3	6	15
1.1.1	Billing & Energy Accounting Cell	0	0	1	4	4	4	4	17
1.2	Recovery Cell	0	0	1	2	2	2	2	9
1.3	Distribution Franchisee Cell	0	0	1	2	2	9	12	42
	Billing & Revenue Department Total	1	1	3	9	8	9	1	4
2	Consumer Services & Business Intelligence Cell	0	0	1	2	0	1	0	4
	Billing & Revenue Department Total	1	1	4	11	8	10	12	47
	Grand Total(A+ B+ C+ D)	5	9	21	59	41	41	95	271

Revised Sanction of other Sections at Corporate office									
Sr. No.	Other Offices/Sections	ED	CE	SE	EE	AD. EE	DY.EE	AE	Total
E		R	R	R	R	R	R	R	R
1	CMD office	0	0	1	0	1	0	0	2
2	Director (Operations) Office	0	0	0	0	0	1	0	1
3	Director (Commercial) Office	0	0	0	0	0	1	0	1
4	Director (Projects) Office	0	0	0	0	0	1	0	1
5	Director (Finance) Office	0	0	0	0	0	1	0	1
6	Director (Human Resource) Office	0	0	0	0	0	1	0	1
7	ED(Distribution) Office	0	0	0	0	0	0	1	1
8	ED (Commercial) Office	0	0	0	0	0	0	1	1
9	ED (Infra) Office	0	0	0	0	0	0	1	1
10	ED (Projects) Office	0	0	0	0	0	0	1	1
11	ED (Billing & Revenue) Office	0	0	0	0	0	0	1	1
12	ED (Human Resource) office	0	0	0	0	0	0	0	0
13	ED (Finance) Office	0	0	0	0	0	0	0	0
14	ED (Security & Enforcement) office	0	0	0	1	1	0	1	3
15	Board Section	0	0	0	0	0	0	1	1
16	Chief Investigation Office, Dharavi	0	1	0	4	3	0	3	11
17	Chief General Manager(T/E) office	0	1	0	0	0	0	0	1
18	Technical Inspection Cell	0	0	0	1	1	1	0	3
19	Information Technology Cell	0	0	0	3	0	0	0	3
20	HRD Cell	0	0	0	0	1	1	0	2
21	Energy Vigilance Commision Cell	0	0	1	1	1	0	0	3
22	Capex Monitoring Cell	0	0	0	1	1	0	0	2
23	Mantralaya Coordination Cell	0	0	0	1	0	0	0	1
Total		0	2	2	12	9	7	10	42

Revised Sanction of QC offices									
Sr.No.	Sections	ED	CE	SE	EE	AD. EE	DY.EE	AE	Total
1	QC Pune office	0	0	0	1	0	1	0	2
2	QC Aurangabad office	0	0	0	1	0	1	0	2
3	QC Kalyan office	0	1	0	1	0	1	0	3
4	QC Nagpur office	0	1	0	1	0	1	0	3
Total		0	2	0	4	0	4	0	10

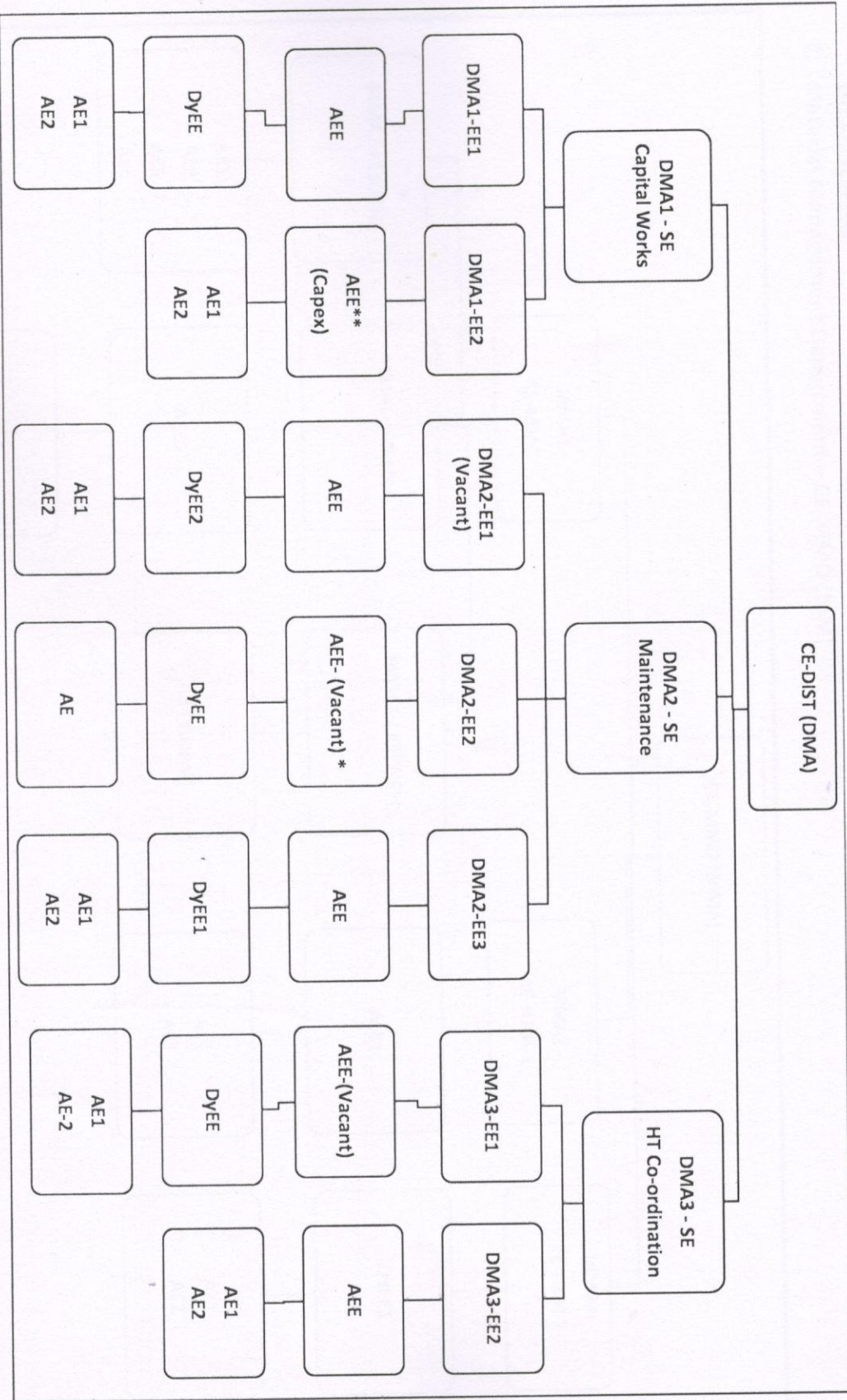
Note :

- 1 EE of Technical & Establishment cell is on Deputation to PS (E) office Mantralaya
- 1 DYEE of HRD Cell is on deputation to PS (E) office Mantralaya
- 1 AE of DF Cell is on Deputation to Maitri Cell, GoM
- 9 Post (3-AEE, 3-DYEE & 3-AE) will be diverted from Infra cell to diferent departments as per vacancy on 01-Aug-2019
- 1 AGM(F&A) & 3 Deputy Manager(F&A) are to be diverted from Finance to Power Purchase & B&R Department respectively.

(OPERATIONS)

1. Distribution & Maintenance Department – CE-Dist. (DMA)

Flow chart-1



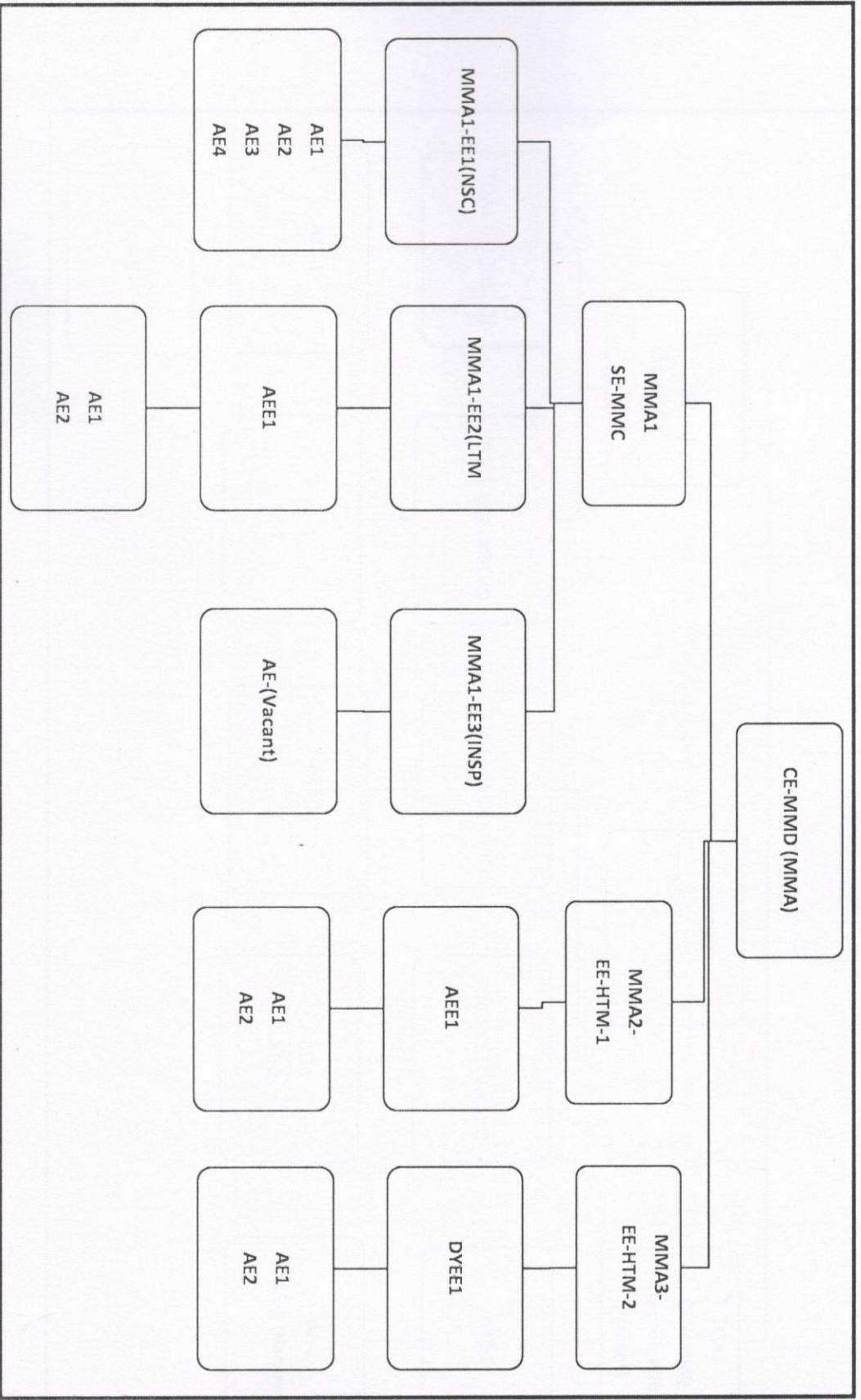
* Will be created after abolishing Infra Cell.
 ** Diverted to Capex Monitoring Cell.

Handwritten signature

(OPERATIONS)

2. Material Management Department – CE-MIMD (MM)

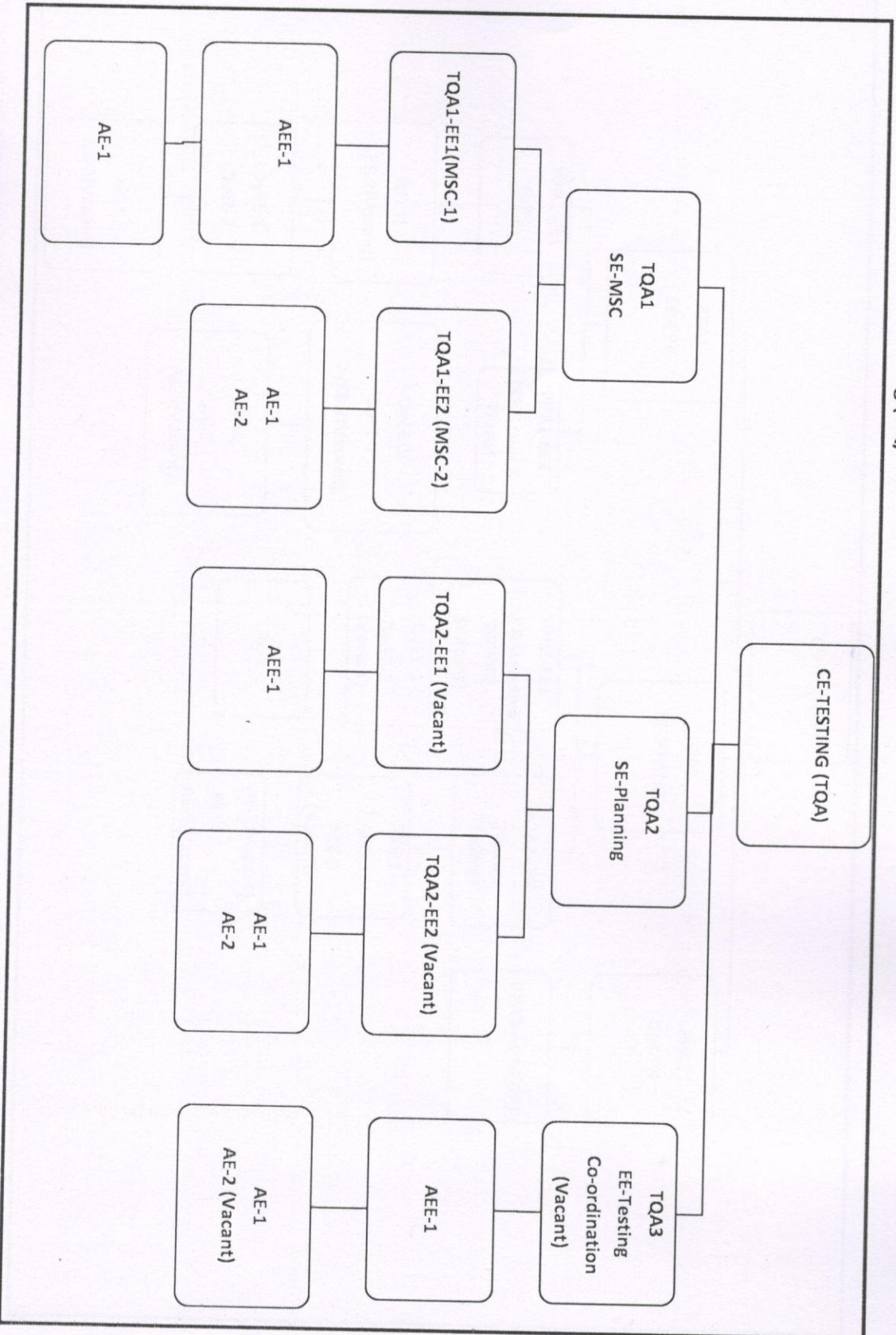
Flow chart-2



[Handwritten signature]

(OPERATIONS)

3. Testing Department – CE-Testing (TQ)



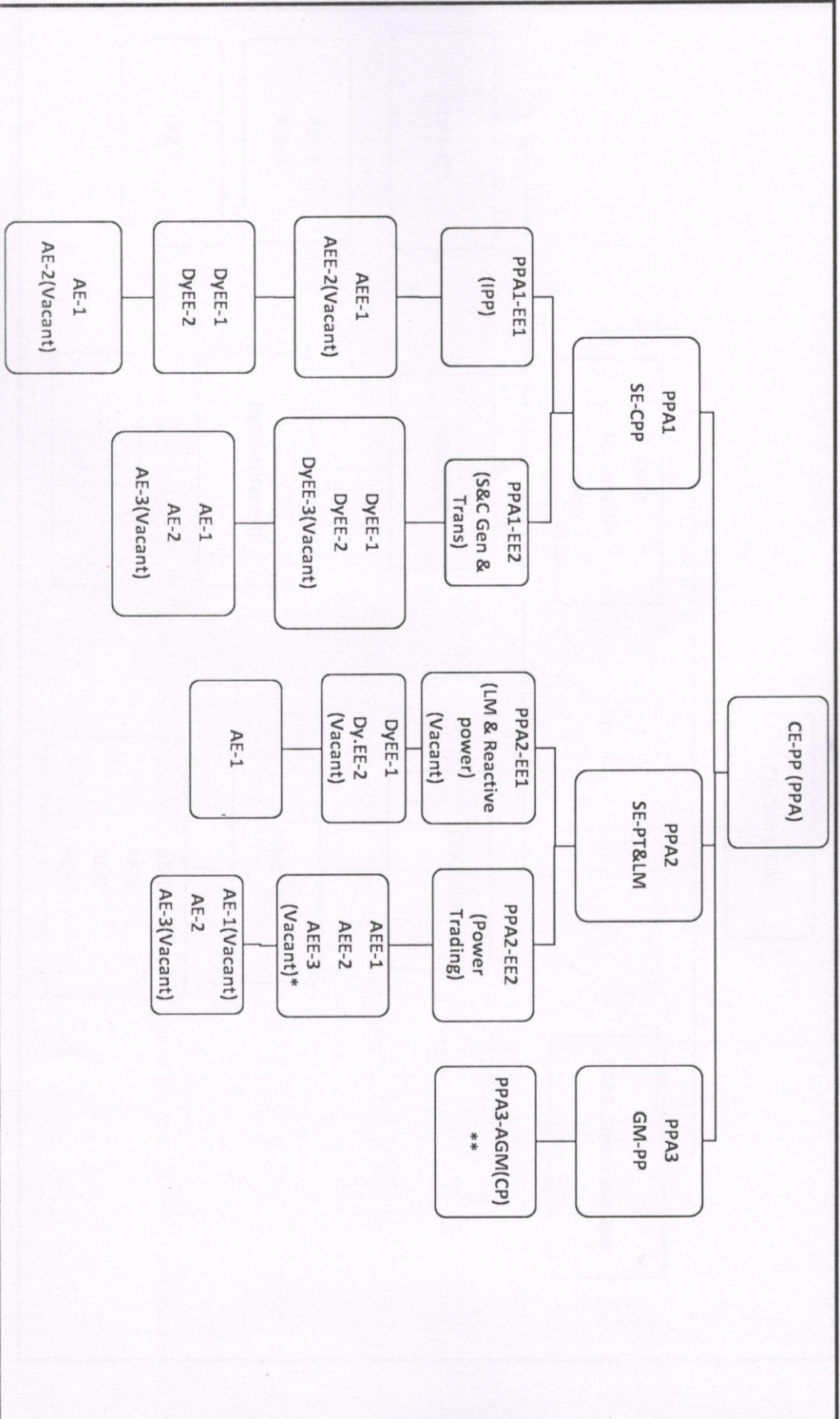
Flow chart-3

Handwritten mark

(COMMERCIAL)

1. Conventional Power Purchase Department (PP) – CE-PP

Flow chart-4



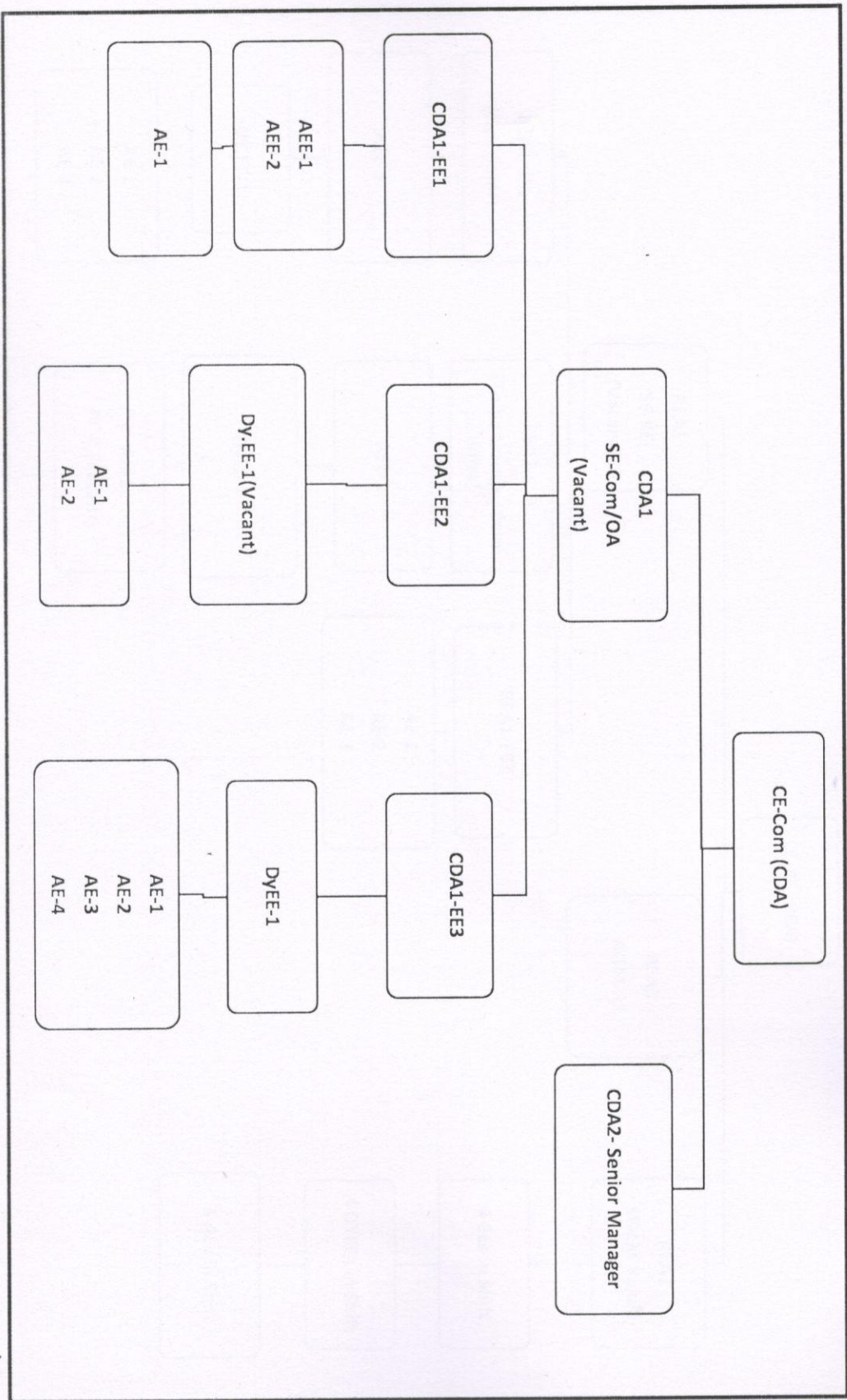
*Will be created after abolishing Infra Cell.

**AGM(CP) will be diverted from Finance.

(COMMERCIAL)

2. Commercial Department (CD) – CE-Comm

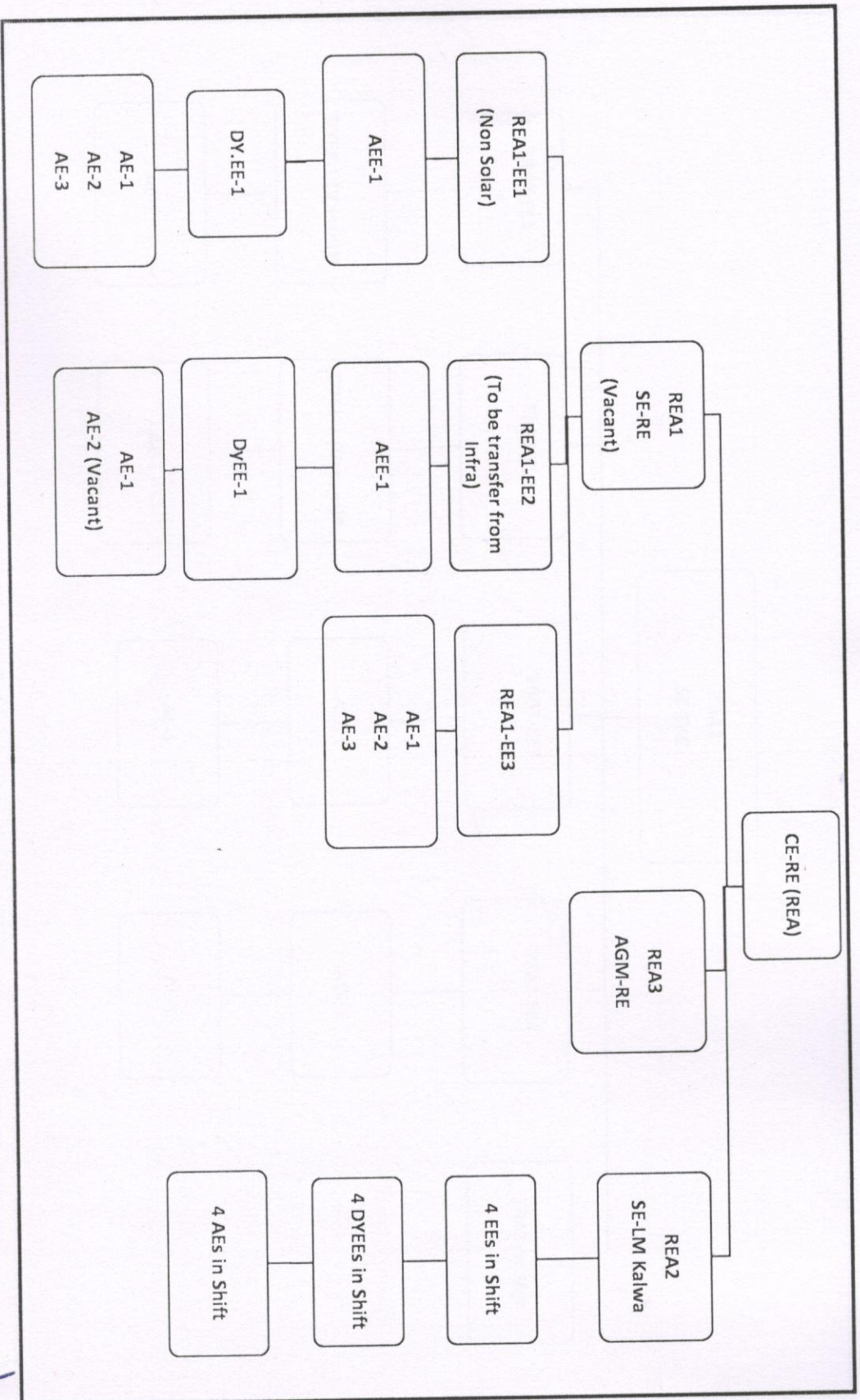
Flow chart-5



Handwritten mark

(COMMERCIAL)
 3. Renewable Energy Department (RE) – CE-RE

Flow chart-6

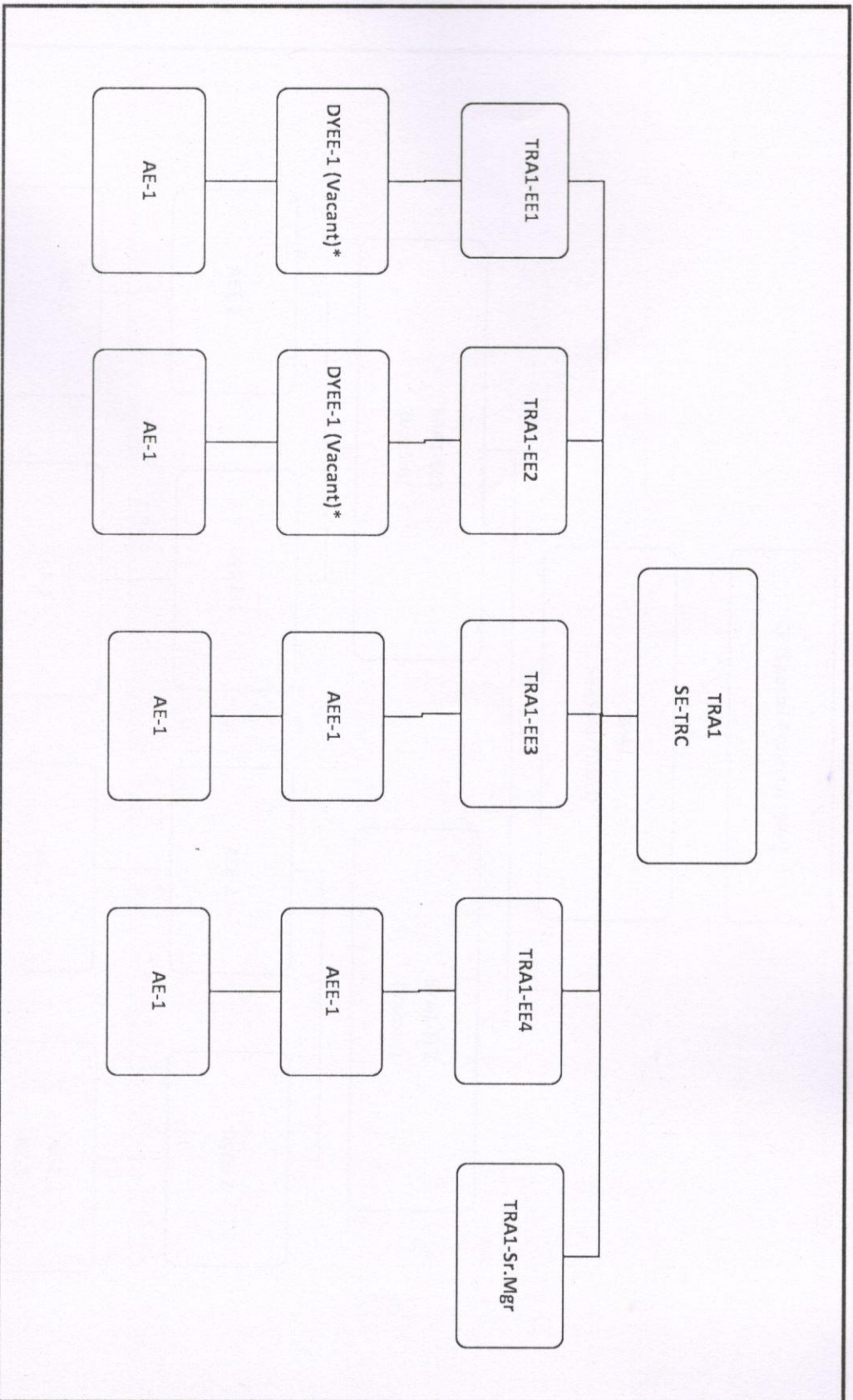


p

(COMMERCIAL)

4. Tariff Regulatory Cell – SE-TRC

Flow chart-7

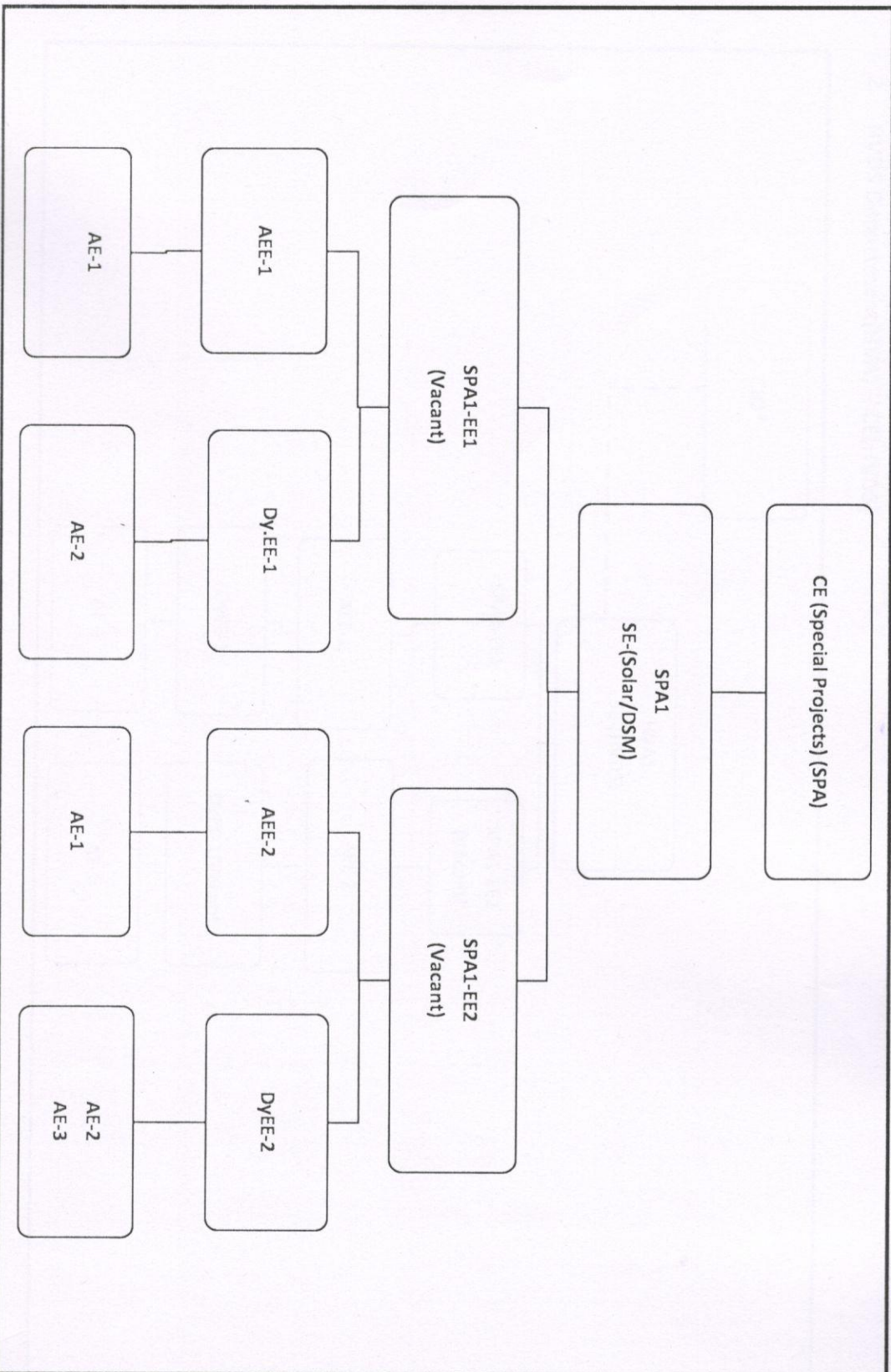


*Will be created after abolishing Infra Cell.

Handwritten signature/initials

(PROJECTS)

1. Special Project Department (SPA)-CE(Special Project)



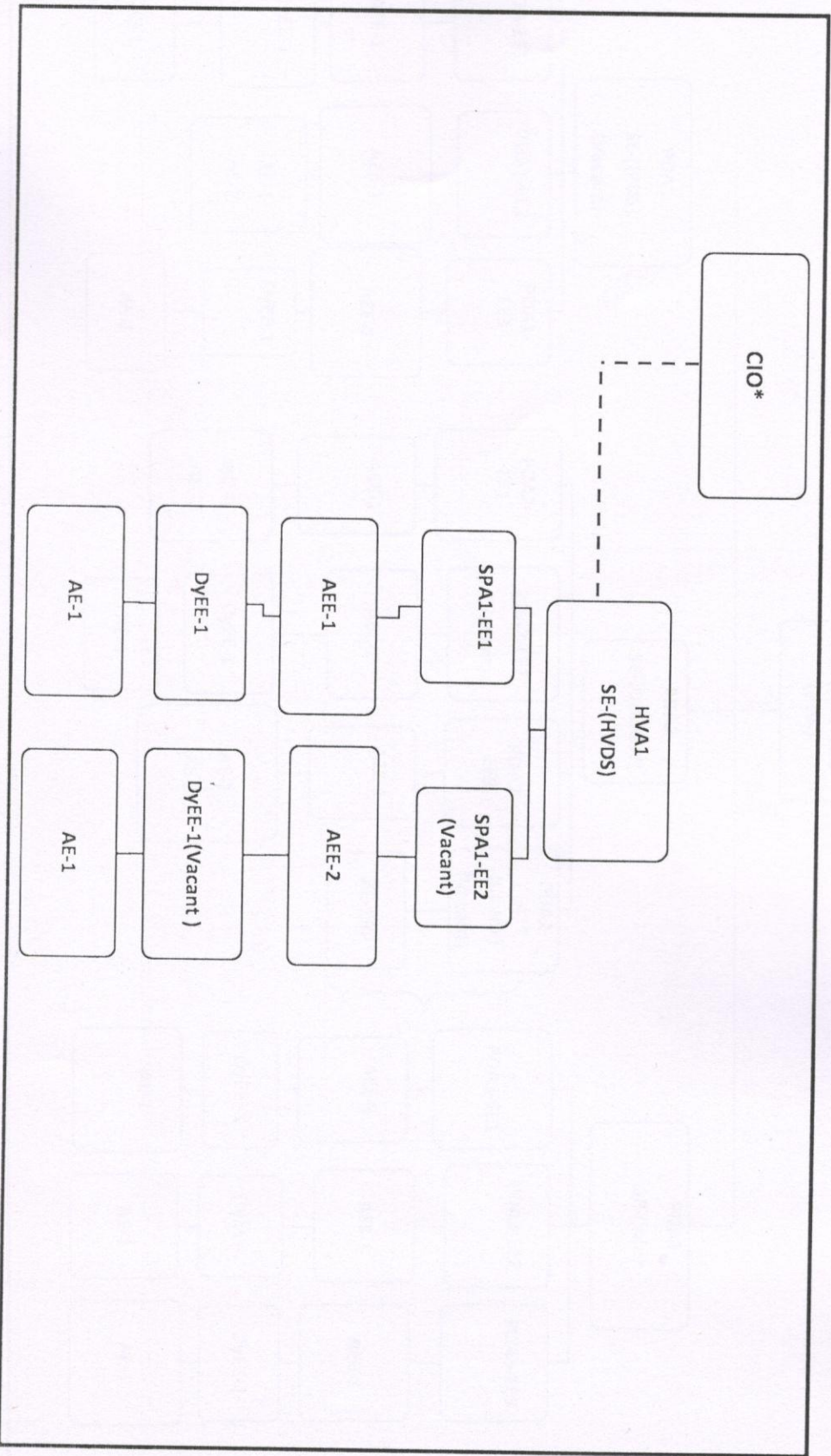
Flow chart-8

h

(PROJECTS)

2. HVDS Department(HVA) – CE(HVDS)

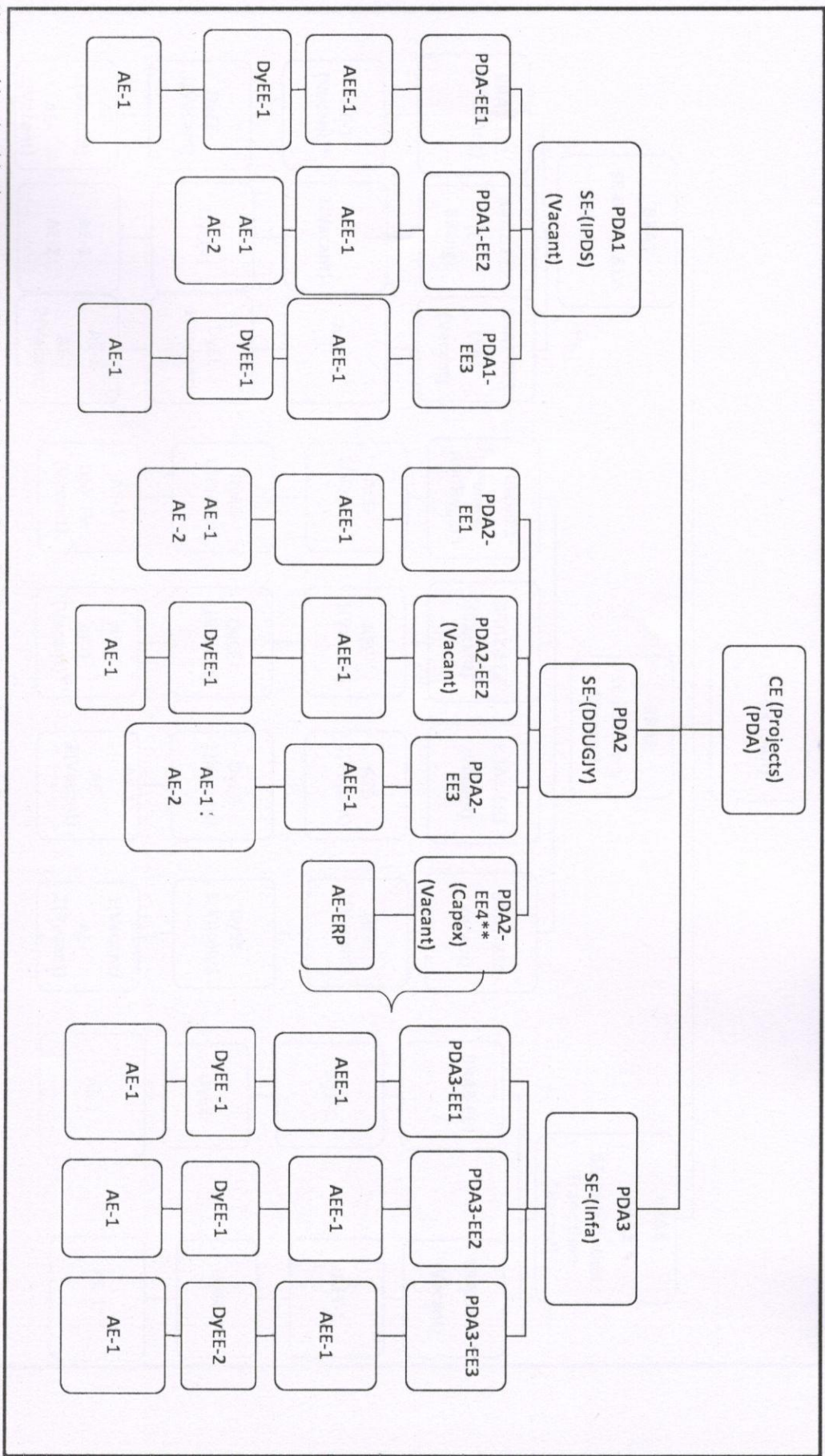
Flow chart-9



*CIO will additionally look after the functioning of HVDS Cell.

(PROJECTS)
 3. Project Department(PDA) – CE(Project)

Flow chart-10



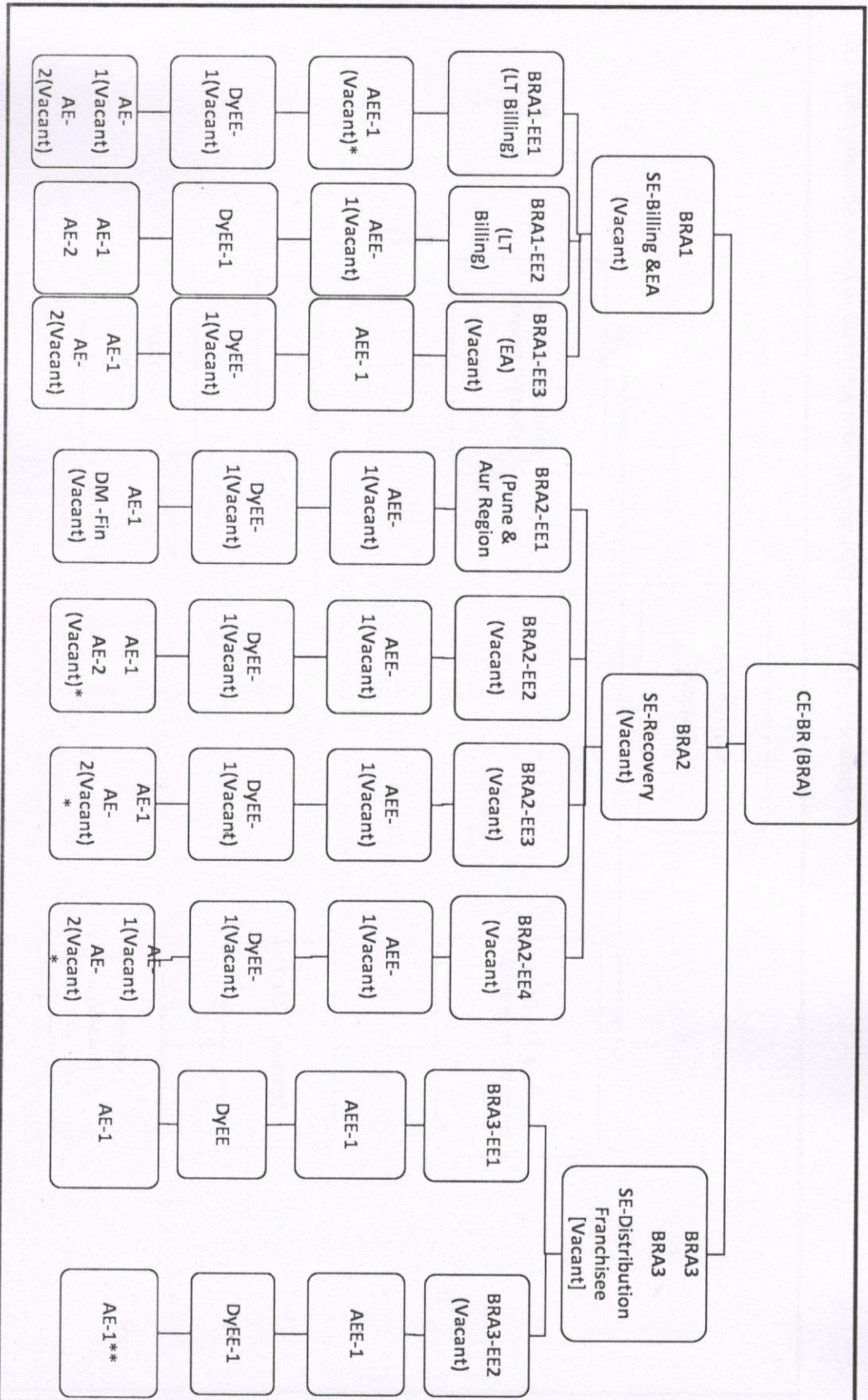
} Not working in this department, EE-Posted at Capex Cell and AE is working for ERP of Projects.
 **Diverted to Capex Cell.

[Handwritten signature]

(BILLING & REVENUE)

1. Billing & Revenue Department (BR) – CE-BR

Flow chart-11



*Will be created after abolishing Infra Cell.

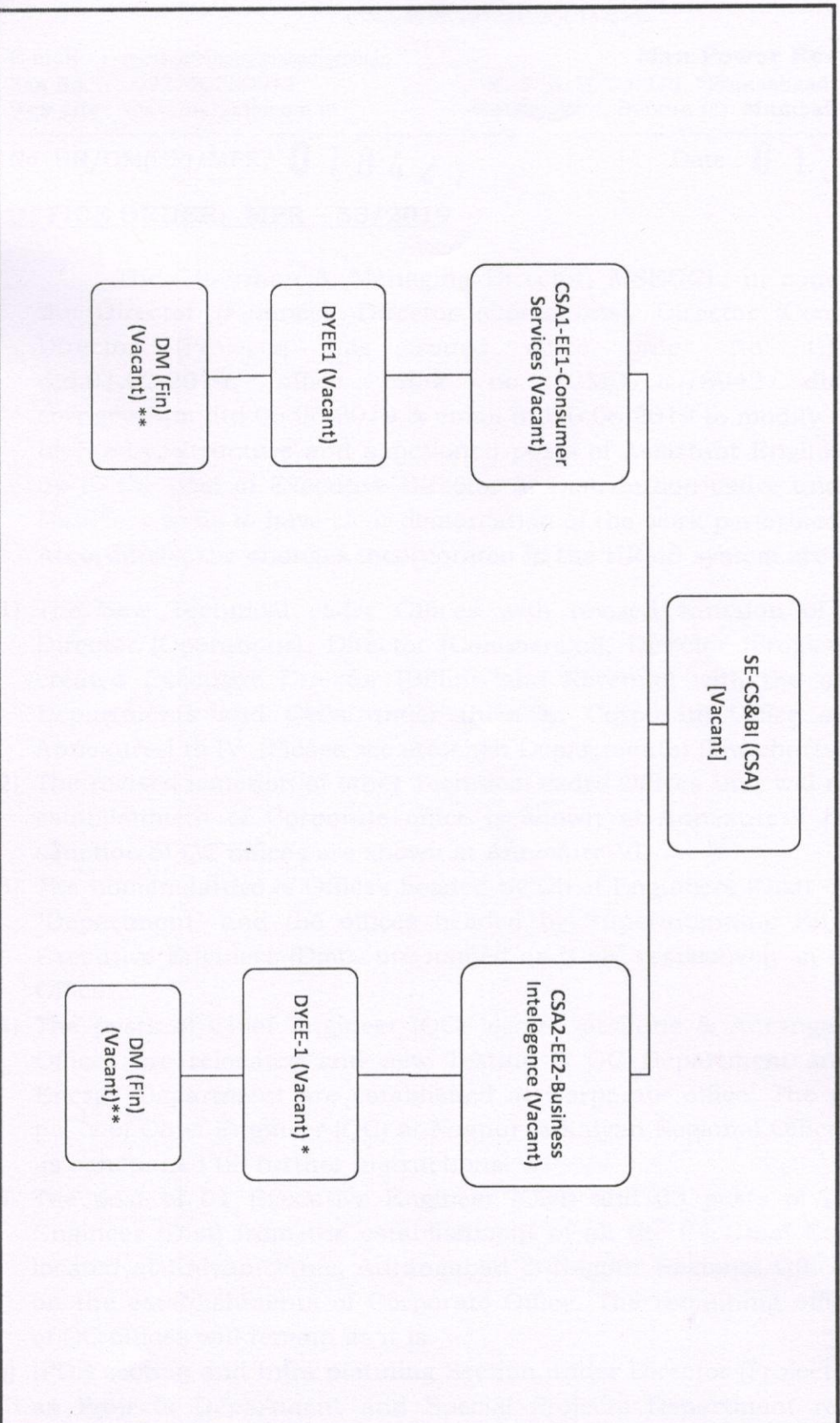
** AE is on deputation to Maitri Cell GoM.

R

(BILLING & REVENUE)

2. Consumer Services & Business Intelligence (CS) – SE – CSBI [Vacant]

Flow chart-12



*Will be created after abolishing Infra Cell.

**DM (F) will be diverted from Finance.

Handwritten signature